



## Education

## Preservation

## Networking

### Thursday, November 14, 2024

7:00 PM Pacific

Speaker: Melissa Barker

### Researching in Libraries and Archives: The Do's and Don'ts

Via Zoom---watch for the link

6:30 Announcements and Sharing

7:00 Program

Those brick-and-mortar buildings that we call **libraries, archives, courthouses, genealogical societies, historical societies and museums** are all around us. They hold the records that we are searching for.

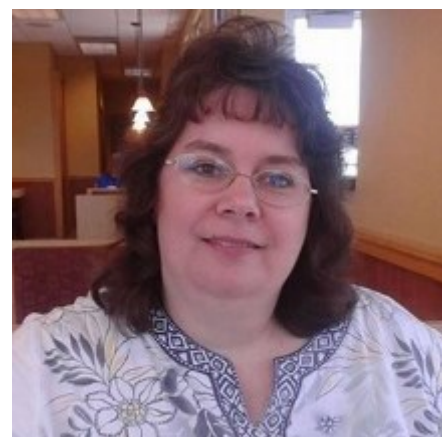
Do you know how to use these repositories for the utmost benefit to your research? This presentation will show the genealogist some Do's and Don'ts to help make the most of a visit to any library or archive.

Questions about archives?

Email: [president@eastsidegenealogicalsociety.org](mailto:president@eastsidegenealogicalsociety.org)

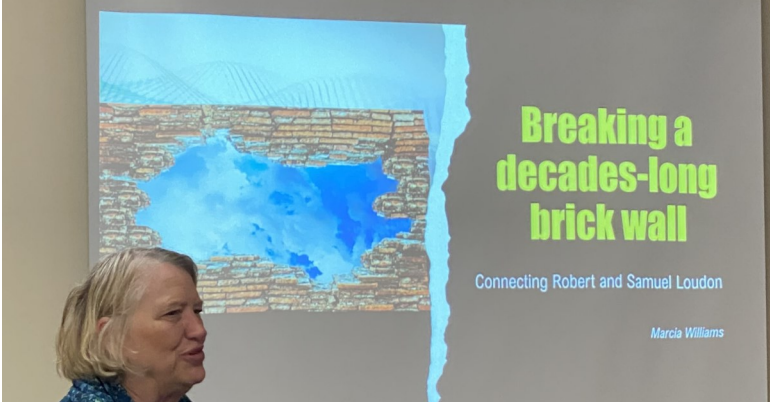
Have you had success or challenges researching an archive?

Email: [publicity@eastsidegenealogicalsociety.org](mailto:publicity@eastsidegenealogicalsociety.org)



## What's in Your Attic—October 12

On Saturday, October 12<sup>th</sup>, a group came to the Bellevue Library to celebrate Family History Month by participating in the What's In Your Attic event. Marcia Williams gave an outstanding presentation on "Solving A Decades Long Brick Wall" sharing found letters from Samuel Loudon written between 1791—1810. Fifteen people shared some of their family treasures including post cards, a doll collection, a piece of salt, a quilt and quilt block, letters, diaries, photos and more. It was fun to see and hear about everything everyone brought to share. And it was great to be able to meet in person and socialize!





# President's Message

Melissa Barker, Archivist for Houston County, Tennessee, will be presenting, "Researching in Libraries and Archives: The Do's and Don'ts" at our November general meeting. She is known as The Archive Lady and writes a popular blog called, "A Genealogist in the Archives." Her presentation is designed to help us maximize the effectiveness of a visit to a library or archive.

## Local Research

I expect there are many of us who do not have ancestors from the area in which we live. This might necessitate a trip to another state or country to visit a repository with information we need. We should remember, however, that libraries and archives do not always restrict their collections to the local geographic area. According to their website,

*The University of Washington Libraries, for example, have a large collection of international and domestic newspapers, "with emphasis on Slavic, South and Southeast Asian papers."*

While most items housed in the Washington State Archives are local, county or state records, there are wonderful photographs of railroads and logging company operations in Washington, Oregon, and California in the "John T. Labbe Collection of Logging and Railroad Photographs, 1892-2010" in the Digital Archives. The individual who indexed and digitized the images donated them to the Washington State Archives.

## Allen County Public Library Genealogy Center

I'm fortunate to be living about 2 hours' drive from the Allen County Public Library (ACPL) in Fort Wayne, Indiana which houses the second largest genealogy collection in the United States. The ACPL Genealogy Center (<https://www.acpl.lib.in.us/genealogy>) has millions of records from around the world in books, microfilm, microfiche, and other media. They create the Periodical Source Index (PERSI), indexing genealogy and local history periodicals from across the United States by subject. Their staff of genealogist librarians is available to assist patrons in person and offers expert assistance via their "Ask a Genealogy Librarian" webpage (<https://www.acpl.lib.in.us/genealogy/ask-genealogy-librarian>).

## Going Beyond Websites for Research

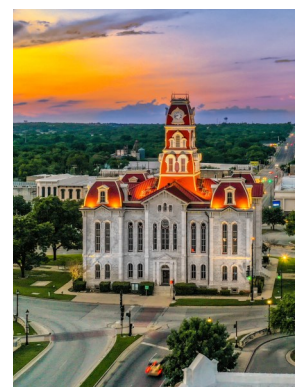
In addition to looking for websites about the area I am researching, I have learned to reach out to archives, libraries, churches, and cemeteries to ask about records for my research subjects. My experience has been that individuals working in these locations are very willing to assist, especially when you show patience and understanding that your genealogy is not their primary job responsibility. In 2019 in advance of a trip to England, I initiated an inquiry with the church in which my parents were married and in whose churchyard several ancestors are buried in the town of Rowley Regis. I had seen the church at the top of the road many times over the years but had never stopped to visit. Two women from the church office met me in the churchyard, opened the church for me to explore, and had pulled burial information on every person with the surnames I was working on. It was a wonderful experience I won't soon forget!

I hope you are planning to join us on **Thursday, November 14 at 7:00 PM PT** for **Melissa Barker's presentation**. She is an excellent speaker and will undoubtedly have many good tips for us about visiting libraries and archives. I look forward to seeing you there!

*Janet Stroebel*



*DAR Library,  
Washington DC*



*VA Historical Society; Stoneham MA Historical Society and Museum; Parker County Courthouse, TX*



# Eastside Genealogical Society

## October 10 Presentation Summary—from two participants

Katherine R. Willson provided a detailed and comprehensive presentation about caring for our family history memorabilia.

I had two 'take-aways' from the evening.

- First, store your items away from direct sunlight, dampness, or humidity. Since we live in a rainy place, these are important reminders.
- Second, when you have unique items and want specialized information about their care, contact a library, museum, or university and ask them! They are experts in the care of precious artifacts so can help us with our family items.

She also provided a handout with websites and books for further information. One site was the American Institute for Conservation: [www.culturalheritage.org/about-conservation/caring-for-your-treasures](http://www.culturalheritage.org/about-conservation/caring-for-your-treasures) and a good looking book was *Creating Family Archives: A Step-by-Step Guide to Saving Your Memories for Future Generations* by Margot Note.

*Celia McNay*



In our October presentation, Katherine Willson suggested preserving family memorabilia, with the 3, 2, 1 rule: have 3 copies, 2 formats, 1 off site for your precious papers. Store memorabilia in dark, cool, dry places!

One resource Katherine mentioned was a book, *Organize your Genealogy: Strategies and Solutions for Every Researcher* by Drew Smith. Luckily for us, it can be found in the

King County Library System.

*Beth Snyder*



Bellevue, Washington

# Eastside Genealogical Society



## German Interest Group

**Presenter: Claire Gebben**



Claire Gebben is the author of the award-winning memoir *How We Survive Here: Families*

*Across Time* (2018) about the discovery of old letters in an attic in Germany written by her ancestors that propels her on a transatlantic quest to learn the truth about their lives. Her novel *The Last of the Blacksmiths* (2014) is based on the true story of a 19th-century German immigrant blacksmith Michael Harm who pursues the American dream.

**When: Friday, 6 December, 2024**

**12:30 to 2:30 pm PDT**

**Topic: German Christmas Stories**

A look at time-honored German Christmas stories, including story excerpts and illustrations that bring out the shared traditions and culture of the holiday. Recounted to German children for centuries, tales such as “Christmas Eve,” “The Elves and the Shoemaker” and others bring the true spirit of Christmas to life.

**Registration:** .Required to obtain the Zoom link to attend each of our meetings.

[Register](#)

Claire’s articles about family history appear in *German Life* magazine, *Your Genealogy Today*, and other publications. She holds an MFA in Creative Writing, and speaks and blogs about German genealogy and migration, 19th century history, and genealogy research and writing family history. More at <http://clairegebben.com>



# Eastside Genealogical Society

## Special Interest Groups—Sponsored by EGS

SIG	Meetings	Coordinator	Email/Website
<b>DNA</b>	Contact Bruce for meeting schedule	Bruce Lee	<a href="mailto:bruceearllee.egs@gmail.com">bruceearllee.egs@gmail.com</a>
<b>Family Tree Maker SIG</b>	3rd Friday of most months at 10:30 AM	Janet Stroebel	<a href="mailto:ftmsig@eastsidegenealogicalsociety.org">ftmsig@eastsidegenealogicalsociety.org</a>
<b>German Interest Group</b>	1st Friday of the month from 12:30-2:30 with times adjusted for international speakers. Don't meet in	Dorothy Pretare	<a href="mailto:GIG_Leader@eastsidegenealogicalsociety.org">GIG_Leader@eastsidegenealogicalsociety.org</a>
<b>Italian Interest Group</b>	meets virtually 1:30-3:30 pm on the 3rd Saturday of the month Sept. through June excluding December	Mary Sangalang	<a href="http://egs-iig.com">egs-iig.com</a>

## Special Interest Groups

Sponsored by [Seattle Genealogical Society](#) (SGS) - Click on [Calendar of Events](#)

[South King County Genealogical Society](#) (SKCGS) - Click on [Meetings and Events](#) —> [Monthly Schedule](#)

[Tacoma-Pierce County Genealogical Society](#) (TPCGS) - Click on [Events](#)

### SGS

Pacific Northwest Interest Group

Write It Up! Writers' Group

Family Search Users Group

MAC Computer Interest Group

Irish Interest Group

Scandinavian Interest Group

Brag and Bricks

Tech Tuesdays

### SKCGS

Technology User Group

Genealogy Chat

Family History Writing

Family Tree Maker Users Group

WikiTree User

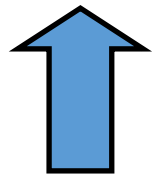
### TPCGS

Genealogy Chat

Legacy Family Tree

Writing Family History

Click on the link of the individual Genealogical Society listed above for dates and times of specific SIGs





# Eastside Genealogical Society

## Family Tree Maker SIG meeting

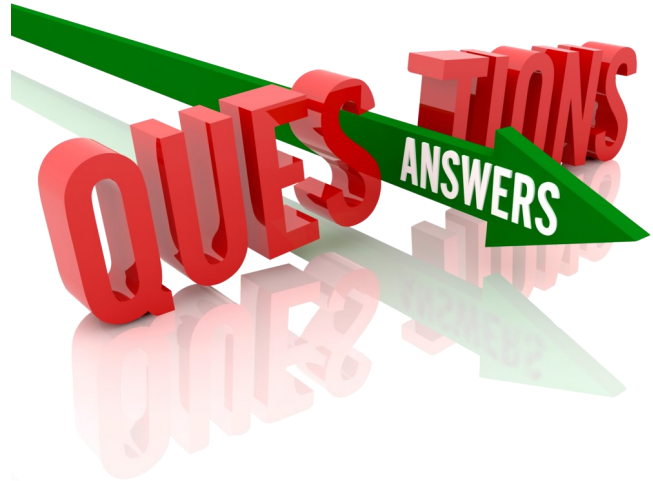
Friday, November 15

10:30 AM PT

Questions or to join email list

[ftmsig@eastsidegenealogicalsociety.org](mailto:ftmsig@eastsidegenealogicalsociety.org)

No December Meeting



## Italian SIG meeting

Saturday, November 16, 2024

1:30 – 3:30 PM Pacific

No December Meeting



Zoom –  
[Request invitation](#)

### Topics:

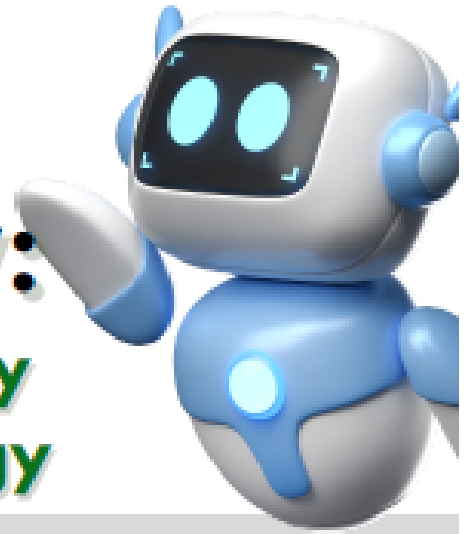
**A(Alien) Files** by Givonna

**Immigration Files** by Elaine

No.	Name	Age	Sex	Occupation	Country of Birth	Place of Birth	Port of Origin	Destination	Remarks
1	...	...	...	...	...	...	...	...	...
2	...	...	...	...	...	...	...	...	...
3	...	...	...	...	...	...	...	...	...
4	...	...	...	...	...	...	...	...	...
5	...	...	...	...	...	...	...	...	...
6	...	...	...	...	...	...	...	...	...
7	...	...	...	...	...	...	...	...	...
8	...	...	...	...	...	...	...	...	...
9	...	...	...	...	...	...	...	...	...
10	...	...	...	...	...	...	...	...	...
11	...	...	...	...	...	...	...	...	...
12	...	...	...	...	...	...	...	...	...
13	...	...	...	...	...	...	...	...	...
14	...	...	...	...	...	...	...	...	...
15	...	...	...	...	...	...	...	...	...
16	...	...	...	...	...	...	...	...	...
17	...	...	...	...	...	...	...	...	...
18	...	...	...	...	...	...	...	...	...
19	...	...	...	...	...	...	...	...	...
20	...	...	...	...	...	...	...	...	...
21	...	...	...	...	...	...	...	...	...
22	...	...	...	...	...	...	...	...	...
23	...	...	...	...	...	...	...	...	...
24	...	...	...	...	...	...	...	...	...
25	...	...	...	...	...	...	...	...	...
26	...	...	...	...	...	...	...	...	...
27	...	...	...	...	...	...	...	...	...
28	...	...	...	...	...	...	...	...	...
29	...	...	...	...	...	...	...	...	...
30	...	...	...	...	...	...	...	...	...



OLYMPIA  
GENEALOGICAL  
SOCIETY



# AI Made Easy:

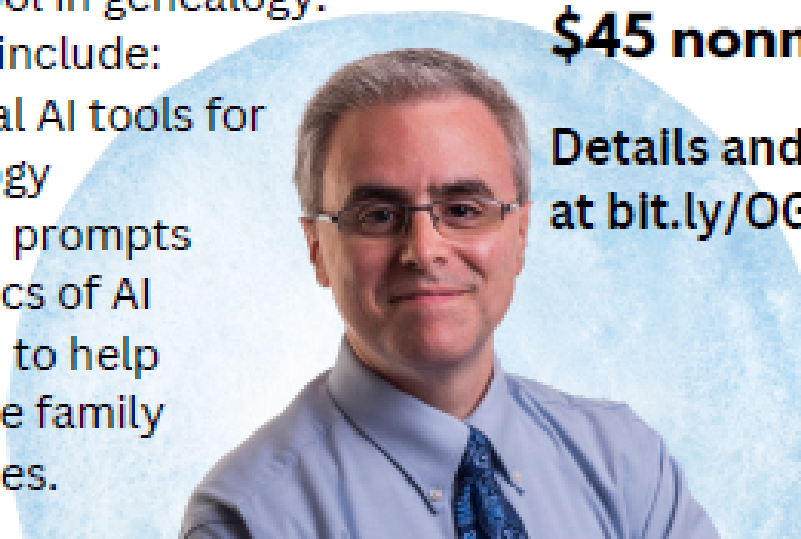
## Boosting Your Genealogy Research with Technology

### OGS Virtual Seminar 2025

Generative AI tools are being used more and more, in genealogy. Renowned genealogy expert (and familiar face)

**Blaine Bettinger**, PhD, JD, will spend the day helping us learn how to harness the power of Artificial Intelligence (AI) as a research tool in genealogy. Topics will include:

- essential AI tools for genealogy
- basic AI prompts
- the ethics of AI
- using AI to help preserve family memories.



**Saturday**  
**Feb. 1, 2025**  
**9 am to 3 pm**

**Live online**

**\$35 OGS members**  
**\$45 nonmembers**

Details and registration  
at [bit.ly/OGS2025](https://bit.ly/OGS2025)





## TWISTED BRANCHES

Monthly feature where we share unusual twigs on our family trees.

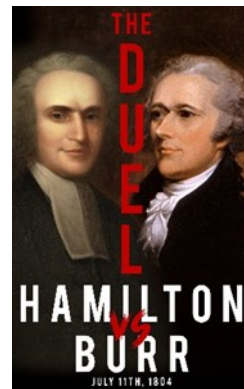
November 2024 Theme:

### Rogues and Scoundrels

**EGS Member Catherine Smith** is a second cousin 7x removed of Aaron Burr.

#### Bigamist?

I knew the name of my 4th great grandfather and where he was born. However, the only David Storer from New Haven, Connecticut married a Mary Redfield in 1808. Mary lived until 1860, yet David was already married in the early 1820s in Puerto Rico. Mary's bio says David "went south and died" and Mary remarried. Yes, David went south, but didn't die until he *fathered seven more children* with his second wife Ceferina Weyle Stewart. Did Mary know he just deserted her? Did Ceferina know he was already married? A scoundrel in my book!



Frank McLaury



Tom McLaury

#### Frank and Tom McLaury

**EGS Member Marcia Williams** has dozens of McClaughry/McLaughry/McLaury entries in her tree on her husband's side. Two that rate "scoundrel status" are his 3<sup>rd</sup> cousins 3x removed. Brothers Robert "Frank" McLaury (1848 – 1881) and Tom McLaury (1853-1881) died in a shootout with the Earp brothers and Doc Holliday at the Gunfight at the OK Corral.

At the Tombstone Arizona reenactment, the audience is instructed to cheer for the lawmen and Boooo loudly when the cowboys appear. Of course, we did just the opposite.

## December/January **TWISTED BRANCHES** Theme

**Related to a President?** Deadline: DECEMBER 4

Send your name, President name and relationship to [Marcia Williams](#)



## EGS Questionnaire—Input Needed!

Help EGS with future planning by answering a few questions. You can email your answers to Kimberly at [vicepresident@eastsidegenealogicalsociety.org](mailto:vicepresident@eastsidegenealogicalsociety.org). When answering the survey questions, you can just list the question number and then your answer rather than writing the question. Thank you for your help!

1. Would you be interested in volunteering with EGS?
  - One-time, monthly, special events, board position, or other?
2. What geographic areas are you researching in?
3. What ethnic groups are you researching?
4. Do you belong to EGS's Facebook group? Use other social media?
5. Do you have suggestions for upcoming speakers and presentations for our EGS meetings?
6. Do you have suggestions for future classes?
7. Do you have suggestions for books EGS would buy to put in the Bellevue Library's genealogical collection?
8. Would you be interested in a genealogical book club that would meet by Zoom and read genealogical fiction and non-fiction?
9. Other suggestions or ideas?

## Welcome to RootsTech

**Dates: 6-8 March 2025**

**Registration now open**

Two ways to attend:

Online FREE, in Person Salt Lake City

Google: RootsTech 2025 for details

# Upcoming Events and Genealogy Help



## Next Lunch Bunch—Thurs, Nov 21

11:30—1:00—reserved room in church across from the **FamilySearch Center**, 10675 NE 20th Street, Bellevue. **Topic:** Using FS App for preserving memories.

Use the **FamilySearch Center Library** with databases either available with a subscription or unavailable online—bring your laptop; library open until 6:00 PM

## Genealogy Help—Two options

### 1. Bellevue Library Computer Lab

Nov 14, Dec 12, Jan 9: 10:30—12:30

No registration required

In-person assistance with ...



Ancestry Library  
Edition

### 2. Zoom 1-on-1 appts available

(Wed: Nov 6, 20, Dec 4; 1:00 or

2:00): [kcls.org](https://kcls.org), then Select **Events**

and type **Genealogy**

See below

Want to help? email: [Jane Wickert](mailto:jane.wickert@kcls.org)



Search the

Events

Genealogy

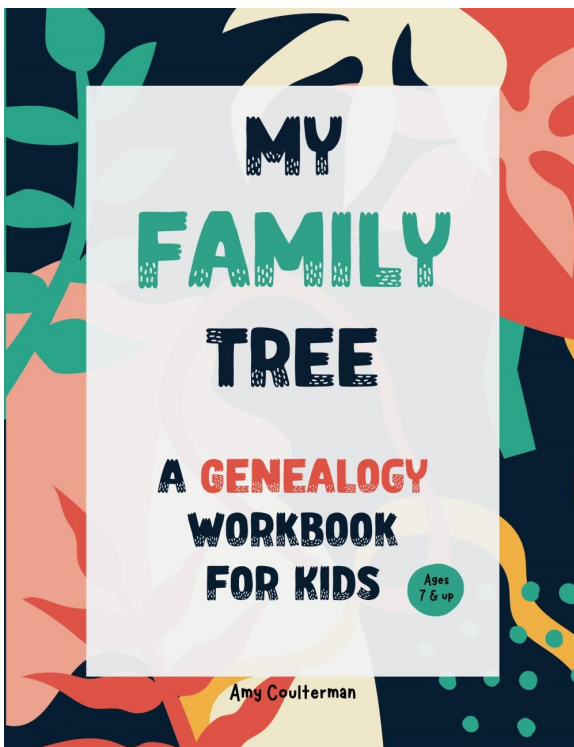
## Book of the Month

Discover genealogy for kids through guidance and teamwork

Help your kid discover who they are. Parents, grandparents, guardians and all family members can join in to help preserve experiences and memories. Thoughtful prompts throughout the 140 pages will guide kids through their first time discovering family stories and journeys and building their family tree:

- Keep vital details for close family.
- Learn about parents' and grandparents' lives through guided interview questions.
- Find out about family history and traditions.
- Trace ancestors' journeys.
- Create family genealogy charts and art.

Ages: 6—12; Paperback, \$10.99 on Amazon



# Website of the Month—[ArchiveGrid](https://researchworks.oclc.org/archivegrid/)

<https://researchworks.oclc.org/archivegrid/>



Search for people, places, events, and more

Search

FIND ARCHIVES NEAR YOU

Leaflet | Powered by Esri | Map data © OpenStreetMap contributors, CC-BY-SA, Imagery © Mapbox

- United States
  - ▶ Alabama
  - ▶ Alaska
  - ▶ Arizona

## ABOUT ARCHIVEGRID

ArchiveGrid includes over 7 million records describing archival materials, bringing together information about historical documents, personal papers, family histories, and more. With over 1,400 archival institutions represented, ArchiveGrid helps researchers looking for primary source materials held in archives, libraries, museums and historical societies.

If you'd like to see your [collections included](#) in ArchiveGrid or have questions about the ArchiveGrid project, please get in touch with us.

## LOOKING FOR DIGITAL CONTENT?

### ***Partial List of Washington State Archives***

Eastern Washington State Historical Society - Northwest Museum of Arts and Culture

Eastern Washington University - Archives and Special Collections

Gonzaga University - Foley Center Library

Museum of Flight - Archives

Museum of History and Industry

Pacific Lutheran University - Special Collections and Archives Department

Seattle Municipal Archives



# Eastside Genealogical Society

[HOME](#)  
 [ABOUT EASTSIDE GENEALOGICAL SOCIETY](#)  
 [MEETING INFO AND ARCHIVES](#)  
 [MEMBERSHIP](#)  
 [SPECIAL INTEREST GROUPS](#)  
[RESEARCH ASSISTANCE](#)  
[RESOURCES](#)  
[NEWS AND ANNOUNCEMENTS](#)

Website: [Eastside Genealogical Society – Home](#)

## VOLUNTEER



**Become involved in Eastside Genealogical Society.**

Expand your knowledge and share with other genealogy geeks. Contact **Janet Stroebel** to explore opportunities that match your skills.

### EGS Board of Directors

<b>President</b>	Janet Stroebel	<a href="mailto:president@eastsidegenealogicalsociety.org">president@eastsidegenealogicalsociety.org</a>
<b>Vice President</b>	Kimberly Nichols	<a href="mailto:vicepresident@eastsidegenealogicalsociety.org">vicepresident@eastsidegenealogicalsociety.org</a>
<b>Secretary</b>	Janice Leitzke	<a href="mailto:secretary@eastsidegenealogicalsociety.org">secretary@eastsidegenealogicalsociety.org</a>
<b>Treasurer</b>	Glen McNay	<a href="mailto:treasurer@eastsidegenealogicalsociety.org">treasurer@eastsidegenealogicalsociety.org</a>
<b>Trustee</b>	Marcia Williams	<a href="mailto:newsletter@eastsidegenealogicalsociety.org">newsletter@eastsidegenealogicalsociety.org</a>
<b>Book Committee</b>	Open	<a href="mailto:bookcommittee@eastsidegenealogicalsociety.org">bookcommittee@eastsidegenealogicalsociety.org</a>
<b>Education</b>	Bob Barnes	<a href="mailto:education@eastsidegenealogicalsociety.org">education@eastsidegenealogicalsociety.org</a>
<b>Membership</b>	Celia McNay	<a href="mailto:egsgenealogyhelpers@yahoo.com">egsgenealogyhelpers@yahoo.com</a>
<b>Programs</b>	Beth Snyder	<a href="mailto:programs@eastsidegenealogicalsociety.org">programs@eastsidegenealogicalsociety.org</a>
<b>Publicity</b>	Catherine Smith	<a href="mailto:publicity@eastsidegenealogicalsociety.org">publicity@eastsidegenealogicalsociety.org</a>
<b>SIG Coordinator</b>	Jane Wickert	<a href="mailto:SIG-coordinator@eastsidegenealogicalsociety.org">SIG-coordinator@eastsidegenealogicalsociety.org</a>
<b>Webmaster</b>	Melissa Kacher	<a href="mailto:webmaster@eastsidegenealogicalsociety.org">webmaster@eastsidegenealogicalsociety.org</a>

We need your help to make this newsletter meaningful to our members! If you have ideas for articles or features you would like to see, suggestions for improvement, or would like to write a book review or article for the newsletter, please email us at [newsletter@eastsidegenealogicalsociety.org](mailto:newsletter@eastsidegenealogicalsociety.org)

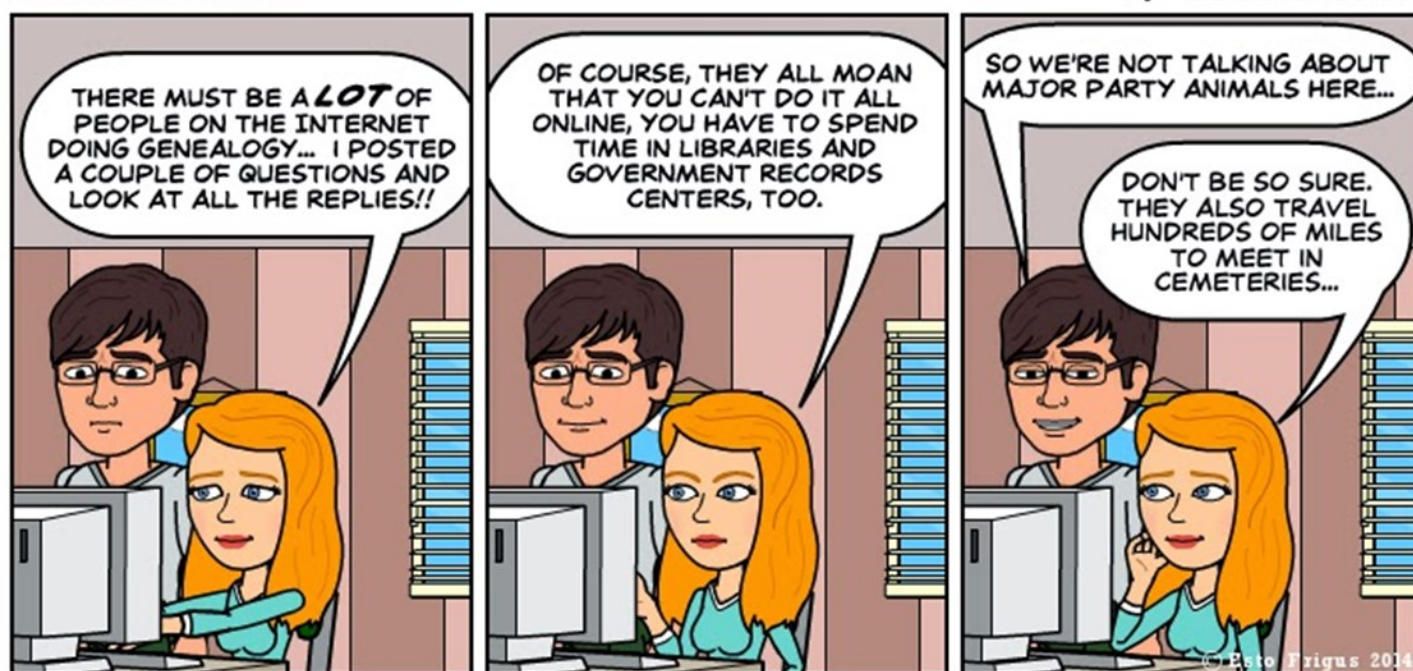
# For Your Calendar

## See Newsletter for details

Date	Event	Page
6-Nov	1-on-1 appointments - Genealogy Help	12
14-Nov	Eastside Genealogical Society Monthly Meeting	1
14-Nov	Genealogy Help - Bellevue Library	12
15-Nov	Family Tree Maker SIG	8
16-Nov	Italian SIG	8
20-Nov	1-on-1 appointments - Genealogy Help	12
21-Nov	Lunch Bunch and Library Research	12
4-Dec	Twisted Branches Deadline Newsletter articles deadline	10
4-Dec	1-on-1 appointments - Genealogy Help	12
6-Dec	German Interest Group	6
12-Dec	Genealogy Help - Bellevue Library	12

### GENEAPALOOZA

BY ESTO FRIGUS



WWW.BITSTRIPS.COM